

Date of issue: January 3<sup>rd</sup> 2017

## Product Discontinuation Notice

Dear Valued Customer,

This letter serves as formal notification that Altech Corp. will discontinue the following Terminal Block products as of July 31<sup>st</sup> 2017.

Our intent is to allow orders for these parts until the discontinue date in order to allow for future planning by our customers and after until stock is depleted. For the improved replacements and accessories please see the attached datasheet(s).

Discontinued Part	Replacement Part
CSFL4U	<b>CF4U</b> or <b>CF4SP</b>
CSFL4U(L)/110	<b>CF4U(L)/110-240V</b> or <b>CF4SP(L)/110-240V</b>
CSFL4U(L)/220	<b>CF4U(L)/110-240V</b> or <b>CF4SP(L)/110-240V</b>
CSFL4U(L)/24	<b>CF4U(L)/6-60V</b> or <b>CF4SP(L)/6-60V</b>
CSFL4U(L)/48	<b>CF4U(L)/6-60V</b> or <b>CF4SP(L)/6-60V</b>

Altech Corp appreciates and values our business relationship and looks forward to your continued interest in our products. While we regret any inconvenience this announcement may cause, we are eager to supply your future product requirement with our quality product lines.

Please contact Altech Corp. if you have additional questions.

Best regards,



Markus Kraess  
[Markus@altechcorp.com](mailto:Markus@altechcorp.com)

# FUSE BLOCKS

SCREW TERMINAL BLOCKS

FUSE BLOCKS, 5 x 20 and 5 x 25 mm

## HIGHLIGHTS

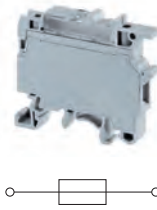
### FEATURES

- CF4U Series accepts 5x20mm/ 5x25mm fuse types
- Completely enclosed, no endplates
- CF4U(L) version with LED for blown fuse indication
- Large marking area
- No polarity required
- Blocks can be used for AC & DC Voltages

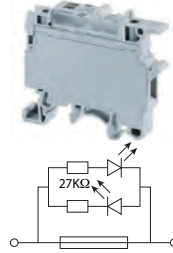
### APPLICATIONS

- Control systems with fuse protection

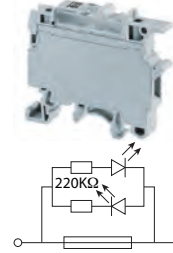
### CF4U



### CF4U(L)/6-60V



### CF4U(L)/110-240V



### Dimensions & Weight

Width	8 mm	8 mm	8 mm
Length	57.0 mm	57.0 mm	57.0 mm
Height w DIN Rail	35 x 7.5 mm 35 x 15 mm	50.3 mm 57.6 mm	50.3 mm 57.6 mm
Weight per piece	14.8 g	15.4 g	15.4 g

### Technical Data/Ratings

Approvals								
Wire Size (solid / stranded)	22-10 AWG		0.2-4 mm <sup>2</sup>		22-10 AWG		0.2-4 mm <sup>2</sup>	
Voltage Rating	600 V		800 V AC/DC		600 V		800 V AC/DC	
Current Rating	10 A		6.3 A		10 A		6.3 A	
Torque	7 lb-in		0.5 Nm		7 lb-in		0.5 Nm	
Insulation Material	Polyamide 66							

### Fuse Specifications

Fuse Type	5x20 mm / 5 x 25 mm	5x20 mm / 5 x 25 mm	5x20 mm / 5 x 25 mm
LED Indicator Voltage	-	6-60V AC/DC	110-240V AC/DC

### Installation Instructions

Wire Stripping Length	9.5 mm	9.5 mm	9.5 mm
Screwdriver	Flat Head 0.6 x 3.5 mm	Flat Head 0.6 x 3.5 mm	Flat Head 0.6 x 3.5 mm

### Terminal Blocks

	Cat. No.	Std. Pk.	Cat. No.	Std. Pk.	Cat. No.	Std. Pk.
<b>Grey (standard)</b>	<b>CF4U</b>	50	<b>CF4U(L)/6-60V</b>	50	<b>CF4U(L)/110-240V</b>	50
Blue BU	CF4U/BU	50	CF4U(L)/6-60V/BU	50	CF4U(L)/110-240V/BU	50
Black BL	CF4U/BL	50	CF4U(L)/6-60V/BL	50	CF4U(L)/110-240V/BL	50

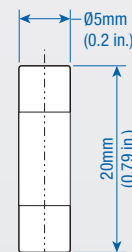
### Accessories

	Cat. No.	Std. Pk.	Cat. No.	Std. Pk.	Cat. No.	Std. Pk.
DIN Rail	2511120	20	2511120	20	2511120	20
	CA701-15/S	20	CA701-15/S	20	CA701-15/S	20
	2511160	10	2511160	10	2511160	10
External Jumper	2 pole CA711/2	100	2 pole CA711/2	100	2 pole CA711/2	100
	3 pole CA711/3	50	3 pole CA711/3	50	3 pole CA711/3	50
	4 pole CA711/4	50	4 pole CA711/4	50	4 pole CA711/4	50
	10 pole CA711/10	20	10 pole CA711/10	20	10 pole CA711/10	20
Marking Tag	On Terminal MT8	1 Pk. (100 tags)	On Terminal MT8	1 Pk. (100 tags)	On Terminal MT8	1 Pk. (100 tags)
	On Fuse Carrier MT6	1 Pk. (100 tags)	On Fuse Carrier MT6	1 Pk. (100 tags)	On Fuse Carrier MT6	1 Pk. (100 tags)

### Fuses 5 x 20 mm

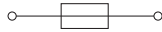


Current Rating	Slow Blow Cat. No	Fast Blow Cat. No
0.1A	0.1M5x20T	0.1M5x20F
0.2A	0.2M5x20T	0.2M5x20F
0.5A	0.5M5x20T	0.5M5x20F
1.0A	1.0M5x20T	1.0M5x20F
2.0A	2.0M5x20T	2.0M5x20F
4.0A	4.0M5x20T	4.0M5x20F
5.0A	5.0M5x20T	5.0M5x20F
6.3A	6.3M5x20T	6.3M5x20F
8.0A	8.0M5x20T	8.0M5x20F
10.0A	10.0M5x20T	10.0M5x20F

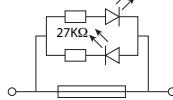


FUSE BLOCKS, 5 x 20 and 5 x 25 mm

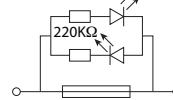
### CF4SP



### CF4SP(L)/6-60V



### CF4SP(L)/110-240V



### Dimensions & Weight

Width	6 mm	6 mm	6 mm
Length	58.5 mm	58.5 mm	58.5 mm
Height w/ DIN Rail	35 x 7.5 mm 35 x 15 mm	70.0 mm 77.5 mm	70.0 mm 77.5 mm
Weight per piece	16.9 g	17.4 g	17.4 g

### Technical Data/Ratings

Approvals								
Wire Size (solid / stranded)	24-10 AWG		0.2-4 mm <sup>2</sup>		24-10 AWG		0.2-4 mm <sup>2</sup>	
Voltage Rating	600 V		1000 V AC/DC		600 V		1000 V AC/DC	
Current Rating	10 A		10 A		10 A		10 A	
Torque	4.5 lb-in		0.5 Nm		4.5 lb-in		0.5 Nm	
Insulation Material	Polyamide 66		Polyamide 66		Polyamide 66		Polyamide 66	

### Fuse Specifications

Fuse Type	5x20 mm / 5 x 25 mm	5x20 mm / 5 x 25 mm	5x20 mm / 5 x 25 mm
LED Indicator Voltage	-	6-60V AC/DC	110-240V AC/DC

### Installation Instructions

Wire Stripping Length	8 mm	8 mm	8 mm
Screwdriver	Flat Head 0.6 x 3.5 mm	Flat Head 0.6 x 3.5 mm	Flat Head 0.6 x 3.5 mm

### Terminal Blocks

	Cat. No.	Std. Pk.	Cat. No.	Std. Pk.	Cat. No.	Std. Pk.
<b>Grey (standard)</b>	<b>CF4SP</b>	50	<b>CF4SP(L)/6-60V</b>	50	<b>CF4SP(L)/110-240V</b>	50
Blue BU	CF4SP/BU	50	CF4SP(L)/6-60V/BU	50	CF4SP(L)/110-240V/BU50	
Black BL	CF4SP/BL	50	CF4SP(L)/6-60V/BL	50	CF4SP(L)/110-240V/BL50	

### Accessories

	Cat. No.	Std. Pk.	Cat. No.	Std. Pk.	Cat. No.	Std. Pk.
<b>DIN Rail</b>	2511120	20	2511120	20	2511120	20
	CA701-15/S	20	CA701-15/S	20	CA701-15/S	20
	2511160	10	2511160	10	2511160	10
<b>Internal Jumper</b>	CA722/2	100	CA722/2	100	CA722/2	100
	CA722/3	100	CA722/3	100	CA722/3	100
	CA722/4	100	CA722/4	100	CA722/4	100
	CA722/10	10	CA722/10	10	CA722/10	10
	CA722/100	10	CA722/100	10	CA722/100	10
<b>Insulated Internal Jumper</b>	CA742/2	100	CA742/2	100	CA742/2	100
	CA742/3	100	CA742/3	100	CA742/3	100
	CA742/4	100	CA742/4	100	CA742/4	100
	CA742/10	10	CA742/10	10	CA742/10	10
	CA742/100	10	CA742/100	10	CA742/100	10
<b>External Jumper</b>	CA714/2	100	CA714/2	100	CA714/2	100
	CA714/3	100	CA714/3	100	CA714/3	100
	CA714/4	100	CA714/4	100	CA714/4	100
	CA714/10	20	CA714/10	20	CA714/10	20
<b>Marking Tag</b>	On Terminal	MT6	1 Pk. (100 tags)	MT6	1 Pk. (100 tags)	MT6
	On Fuse Carrier	MT6	1 Pk. (100 tags)	MT6	1 Pk. (100 tags)	MT6

## HIGHLIGHTS

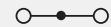
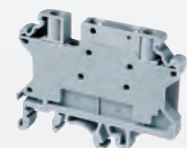
### FEATURES

- CF4SP Series accepts 5x20mm fuse types
- 6mm wide, compact design
- Internal shorting channel
- Completely enclosed, no endplates
- CF4SP(L) version with LED for blown fuse indication
- No polarity required

### APPLICATIONS

- Control systems with fuse protection
- Control Circuits with alternating configuration with (CF4SPFT, CKT4SP, etc...)

### CF4SPFT



Feed Through Terminal  
Same Profile as CF4SP

### Technical Data/Ratings

Approvals		
Wire Size	24-10 AWG	0.2-4 mm <sup>2</sup>
Voltage Rating	600 V	1000 V
Current Rating	30 A	32 A
Torque	4.5 lb-in	0.5 Nm
Insulation Material	Polyamide 66	

Altech fuse terminals are also available with light indication - CSFL4U(L). A specially designed built-in circuit gives light indication in the event of fuse blow out. Thus, fault in a circuit can be easily located.

However, an application of such terminals must take into consideration residual current flow.

DDFL4U - Double Level Fuse Terminal with fuse link on the top level has a separate feed through terminal at the lower level. This eliminates use of an additional feed through terminal.

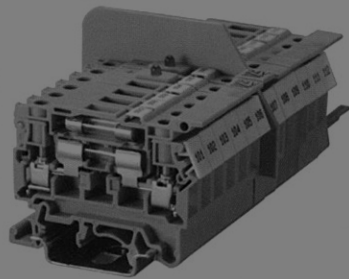
In DDFL4U(E), specially designed built in circuit gives light indication in the event of a fuse blow out at the top level. The terminal provides separate feed through connection possibility at the lower level.

DDFL4U(LR): This is a modified version of DDFL4U(E) terminal where in two equipotential connection points are available on both ends of the terminal.

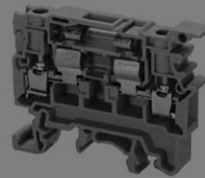
### Important:

The disconnecting device is not suitable for interrupting load. The supply must be switched off before operating the slide link/lever.

† Fuses are sold separately Altech, see pages 23-24.

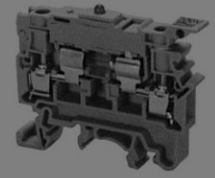


## CSFL4U



† Fuse not included.

## CSFL4U(L)\*



† Fuse not included.

Terminal Width	8 mm	8 mm
Height x Length	43 x 58 mm	43 x 58 mm
Stripping Length	9.5 mm	9.5 mm
Insulation Material	Polyamide 6.6	Polyamide 6.6
Type of Connection	2 screw clamps	2 screw clamps
LED Voltage		24V AC/DC, 48V AC/DC, 110V AC/DC, 220V AC, 300V AC

	Ø5x20, Ø5x25 mm			Ø5x20, Ø5x25 mm		
Approvals						
Wire Range	22-10 AWG	0.5-4 sq.mm	22-10 AWG	22-10 AWG	0.5-4 sq.mm	22-10 AWG
Voltage Rating	600 V	500 V	600 V	600 V	500 V	600 V
Current Rating	6.3 A	6.3 A	10 A	6.3 A	6.3 A	10 A
Torque	7 lb-in	0.5 Nm	7 lb-in	7 lb-in	0.5 Nm	7 lb-in
Other Approvals						

### Terminal Block

End Plate

Isolation Partition

DIN Rail for ordering information refer to page 70

End Stop for ordering information refer to page 72

Internal Jumper 2 pole   
3 pole   
4 pole   
10 pole

Insulated Internal Jumper 2 pole   
3 pole   
4 pole   
10 pole

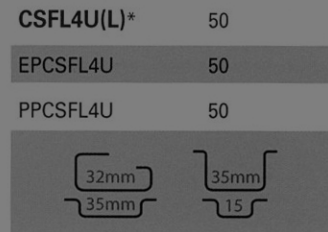
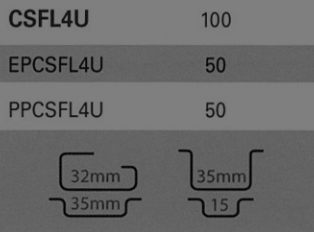
Current Bar 2 pole   
3 pole   
4 pole   
10 pole

Shorting Sleeve & Screw

External Jumper 2 pole   
3 pole   
4 pole   
10 pole

Cat. No.	Std. Pk.
<b>CSFL4U</b>	100
EPCSFL4U	50
PPCSFL4U	50
CA702	50
CA802	50
CA711/2	100
CA711/3	100
CA711/4	50
CA711/10	20

Cat. No.	Std.
<b>CSFL4U(L)*</b>	50
EPCSFL4U	50
PPCSFL4U	50
CA702	50
CA802	50
CA711/2	100
CA711/3	100
CA711/4	50
CA711/10	20



### COLOR BLOCKS

(other than grey standard)

When ordering please add color suffix to Cat. No.

Example: CTS2.5U-N/R

Color	Ordering Suffix
Red	R
Blue	BU
Black	BL
Orange	O
Green	G
Yellow	Y
White	W
Beige	BG
Dark Brown	DB

\* Add required voltage to part number as a suffix. i.e. CSFL4U(L)/24 for 24V AC/DC.

Marking Tags (MT Type)	MT8	100	MT8	100
Marking Tags (MT Type on Lever)	MT2	100	MT2	100